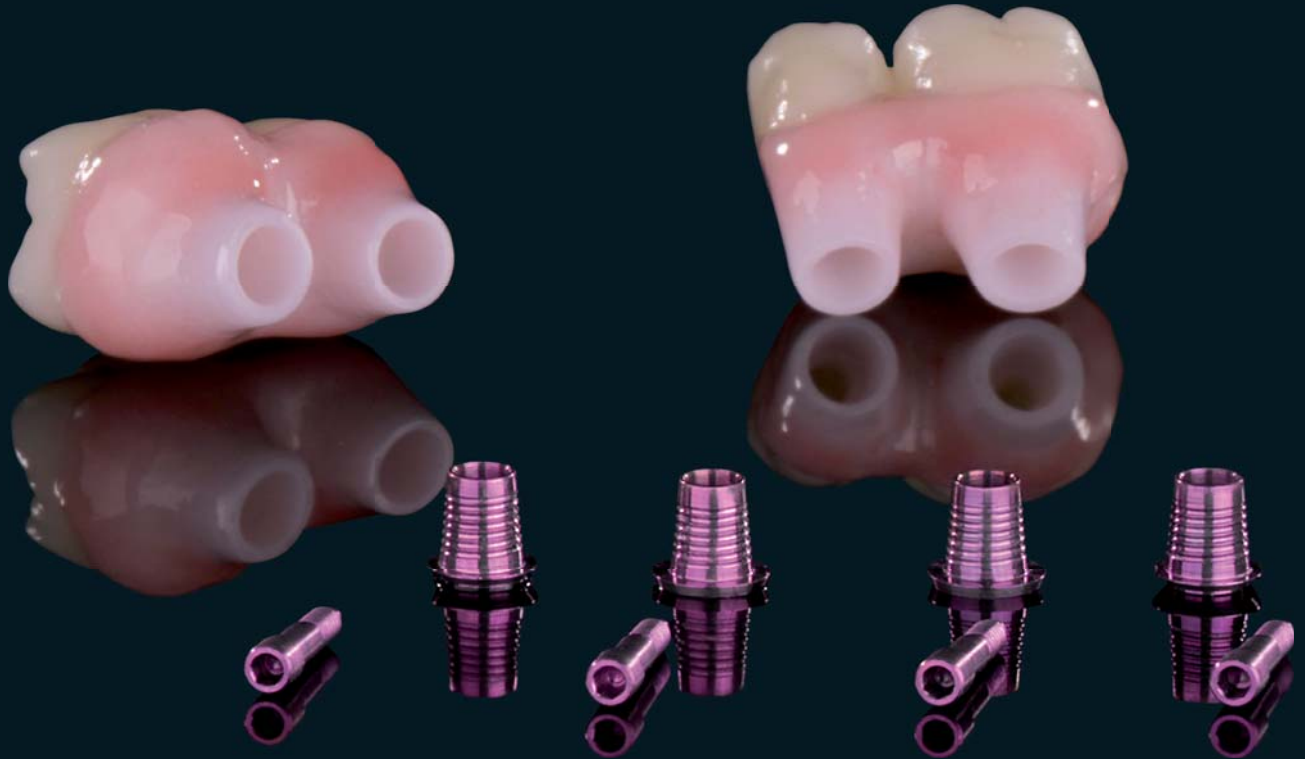


# Zirkonzahn<sup>®</sup>

*Human Zirconium Technology*

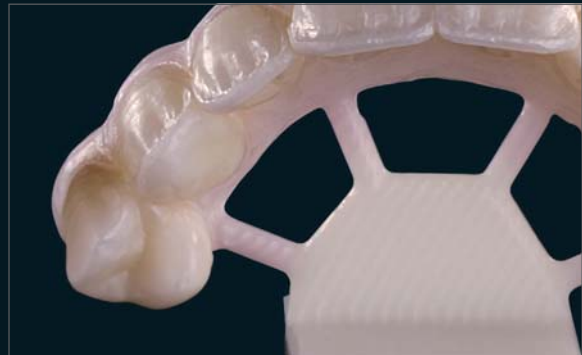
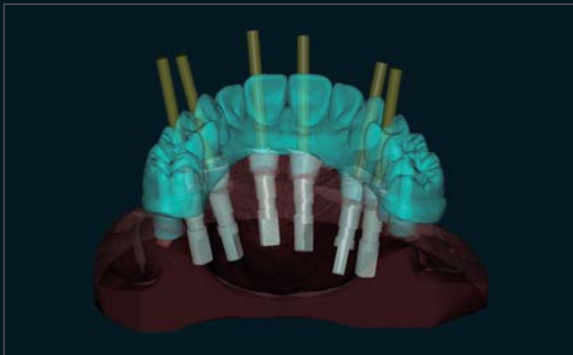
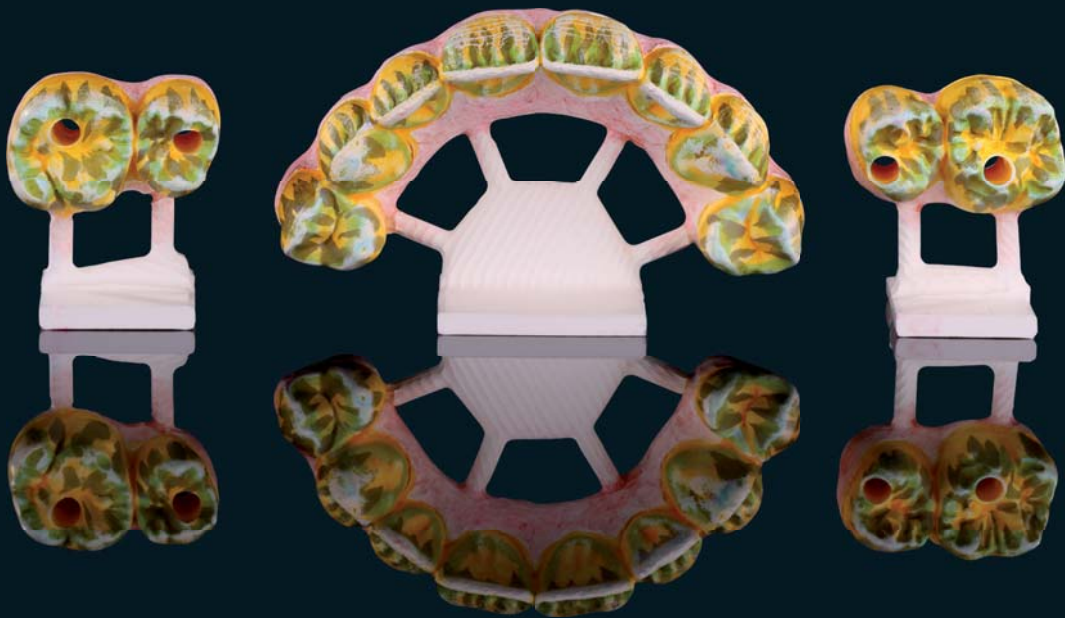


**100% PRETTAU<sup>®</sup> ZIRCONIA – MADE BY CAD/CAM**

*“Zirconia needs heroes” Enrico Steger*

## *Segmented maxillary Prettau® bridge on implants and custom zirconia abutments*

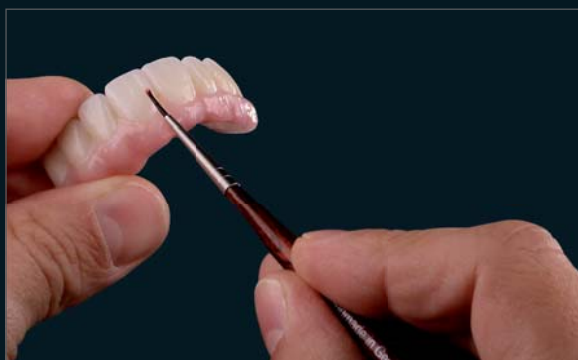
Due to challenges related to the existing bone supply, the implants placed in the maxillary anterior region had to be inclined unfavourably far vestibularly. This in turn resulted in the screw holes being oriented labially, which is why we decided, after consultations with the dentist, to provide custom zirconia abutments. These were adhesively connected to Zirkonzahn titanium bases and anodised in gum colour to ensure a smooth transition to the gingiva. Once these were completed, the superstructures were planned. Two monolithic occlusally screw-retained bridges were designed for the posterior teeth 15–16 and 25–26, while the anterior region was restored with a ceramically veneered framework bonded onto the custom abutments intraorally. After milling, the zirconia frameworks were customised with Colour Liquid Prettau® Aquarell, then sintered and finalised using ICE Zirkon Ceramics and ICE Zirkon 3D Stains by Enrico Steger.



## *The Prettau® Bridge*

Prof. Dr. Wael Att – University Hospital Freiburg, Germany

Manfred Pörnbacher – Zirkonzahn Education Center Brunico, South Tyrol/Italy



# Zirkonzahn®

LECTURE  
SCHEDULE  
ENRICO  
STEGE  
WWW.ZIRKONZAHN.COM



*Milled with Zirkonzahn CAD/CAM System 5-TEC*

## HUMAN ZIRCONIUM TECHNOLOGY

*ZIRKONZAHN Worldwide – Tel +39 0474 066 680 – info@zirkonzahn.com – www.zirkonzahn.com*



WEAA5454=

*All information is subject to change. Errors and omissions excepted. Version: 26/06/2015*